

SCHREIBER						
QTY	TOY	DESCRIPTION	GPM	LtPS	TOTAL GPM	TOTAL LtPS
1	T110	LARGE CROWN JET	41	2.6	41	2.6
1	T220	FANJET	5.5	0.35	5.5	0.35
2	T325S	AQUAPALM SMALL	10	0.6	20	1.2
1	T325L	AQUAPALM LARGE	30	1.9	30	1.9
3	T330	VERTICAL JET	7	0.4	21	1.2
2	T550-5	AQUATUNNEL	35	2.2	70	4.4
1	T740	AQUADROP	70	4.4	70	4.4
1	T811-3	AQUABOW TRIO	90	5.7	90	5.7
1	T816	AQUADUNK	10	0.6	10	0.6
1	T871C	AQUATEE CUSTOM	30	1.9	30	1.9
1	T874C	CLOCKTOWER	60	3.8	60	3.8
1	T888	AQUABRELLA	600	38	600	38
1	AT104	TOT CONDUCTOR	30	1.9	30	1.9
1	AM201	AQUACHOOCH	35	2.2	35	2.2
1	AM202	AQUACHOOCH	25	1.6	25	1.6
1	AM203	AQUACHOOCH	25	1.6	25	1.6
1	AM204	AQUACHOOCH	25	1.6	25	1.6
21					1187.5	74.95

REVISIONS						
REV.	DESCRIPTION	REVISED BY	DATE	REQUESTED BY	APPROVED BY	DATE
0	Drawing released by Luciano on 07/25/2014					

TOTAL AREA: 1874 SQ/FT | 176 SQ/M

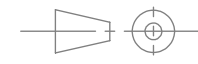


EMPEX WATERTOYS
 591 Albright Rd.
 Uxbridge, ON
 Canada, L9P 1R4
 Tel: 905 649 5047 Fax: 905 649 1757
 Toll Free: 1 866 833 8580

File Name:
 SCHREIBER LAYOUT 2000SQ FT

SCHREIBER

PROJECTION ANGLE



B
 SIZE

SHEET SCALE:
 1:70

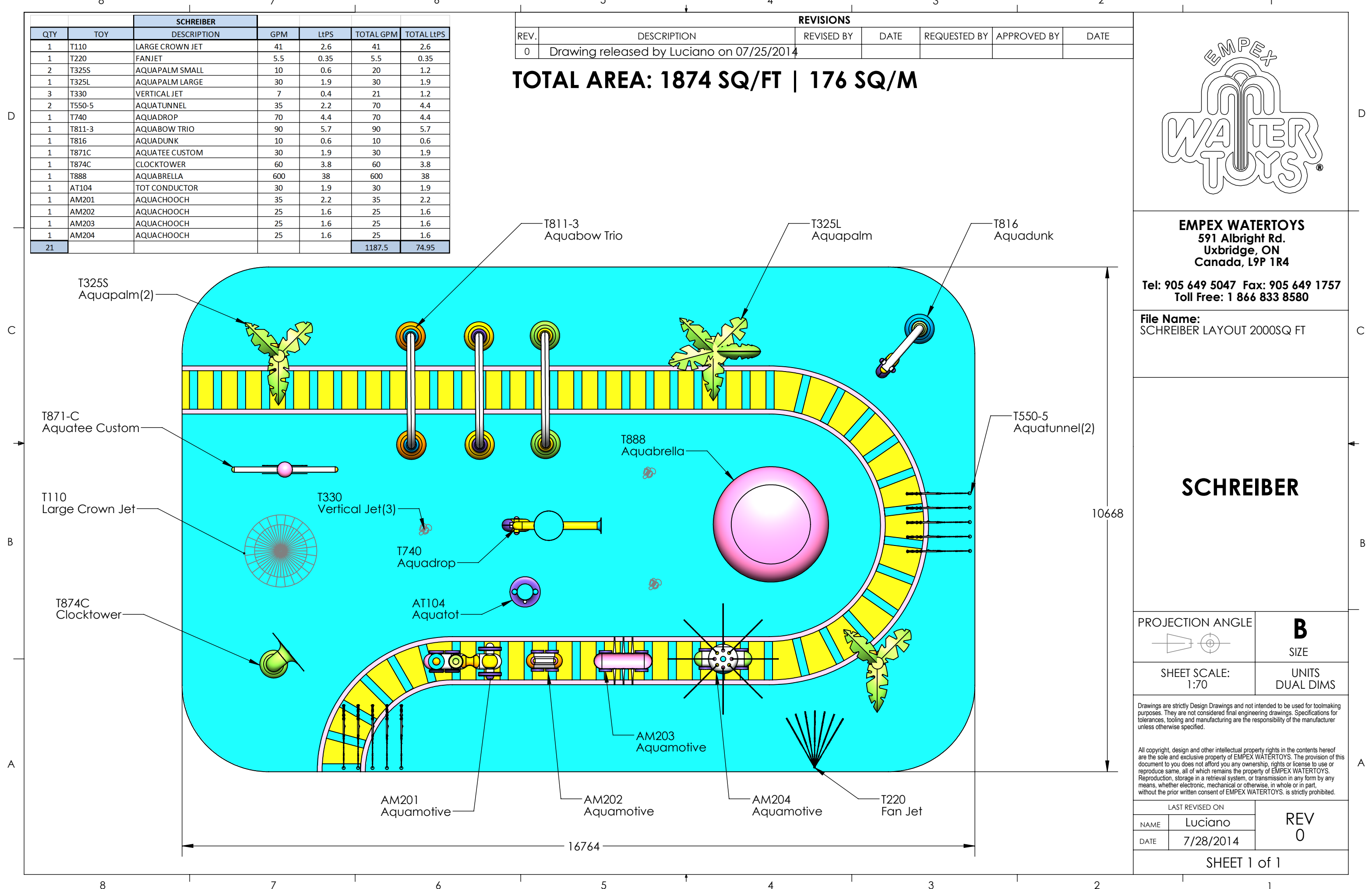
UNITS
 DUAL DIMS

Drawings are strictly Design Drawings and not intended to be used for toolmaking purposes. They are not considered final engineering drawings. Specifications for tolerances, tooling and manufacturing are the responsibility of the manufacturer unless otherwise specified.

All copyright, design and other intellectual property rights in the contents hereof are the sole and exclusive property of EMPEX WATERTOYS. The provision of this document to you does not afford you any ownership, rights or license to use or reproduce same, all of which remains the property of EMPEX WATERTOYS. Reproduction, storage in a retrieval system, or transmission in any form by any means, whether electronic, mechanical or otherwise, in whole or in part, without the prior written consent of EMPEX WATERTOYS, is strictly prohibited.

LAST REVISED ON		REV 0
NAME	Luciano	
DATE	7/28/2014	

SHEET 1 of 1



D

D

C

C

B

B

A

A

10668

16764